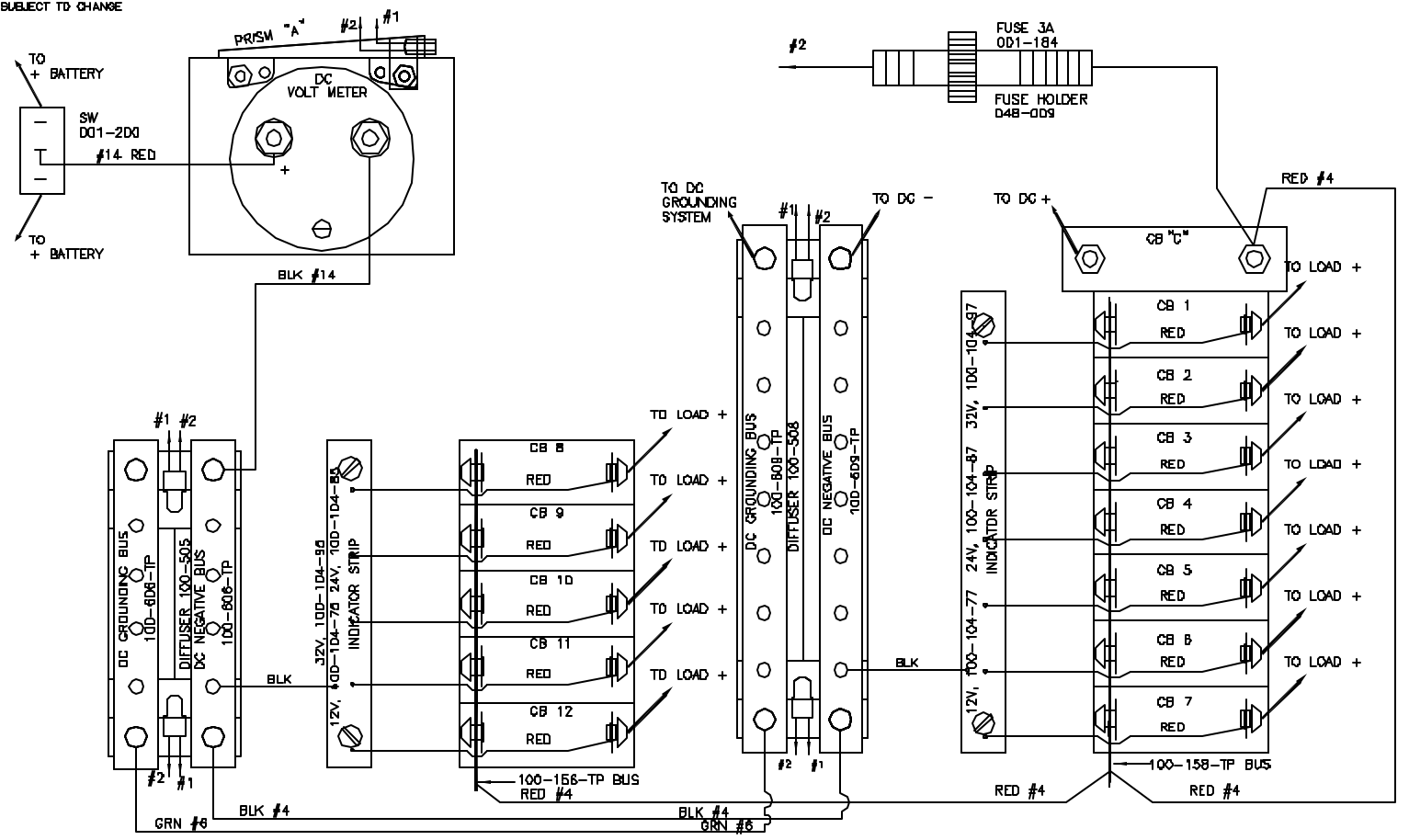


THANK YOU FOR CHOOSING PANELTRONICS, INC. THIS WIRING DIAGRAM WILL AID YOU IN THE INSTALLATION OF YOUR NEW PANEL. IT SHOULD BE KEPT FOR FUTURE REFERENCE AND SERVICE TO THE ELECTRICAL CONTROL PANEL. WITH PROPER MAINTENANCE, YOU WILL ENJOY MANY YEARS OF RELIABLE OPERATION.

ALL PANELTRONICS PRODUCTS SHOULD BE USED AND INSTALLED IN ACCORDANCE WITH THE PROVISIONS OF THE NATIONAL ELECTRIC CODE, U.L. AND OTHER LOCAL, MILITARY OR INDUSTRY STANDARDS THAT ARE PERTINENT TO THE PARTICULAR END USE. IN MARINE INSTALLATIONS, ALL PANELS MUST BE INSTALLED TO MEET THE REQUIREMENTS OF U.S.C.G. 33CFR SUBPART 1, ELECTRICAL SYSTEMS, ON ALL BOATS THAT HAVE GASOLINE ENGINES FOR ELECTRICAL OR MECHANICAL POWER OR PROPULSION, EXCEPT OUTBOARD ENGINES. AMERICAN BOAT AND YACHT COUNCIL (ABYC) STANDARDS AND RECOMMENDED PRACTICES SHOULD ALSO BE FOLLOWED.

PANELTRONICS INCORPORATED IS A COMPANY COMMITTED TO TOTAL QUALITY AND CONTINUOUS PRODUCT RESEARCH, DEVELOPMENT AND IMPROVEMENT, THEREFORE ALL INFORMATION AND SPECIFICATIONS ON THIS DIAGRAM ARE SUBJECT TO CHANGE WITHOUT NOTICE.

REVISIONS			
REV.	DESCRIPTION	EDN.	DATE
0	INITIAL RELEASE & MARKING IN PLATED LAYOUT	380602	1/17/08



DC VOLT METER	
RATING	PART NO
0-18 VDC	289-001
18-32 VDC	289-017
0-50 VDC	289-025
DIGITAL	57D-001

CB1 - CB12	
RATING	PART NO
5A	208-D70S
10A	208-D71S
15A	208-D72S
20A	208-D73S
25A	208-D74S
30A	208-D75S
40A	208-D76S
50A	208-D77S

BACKLIGHT ASSY "A"	
RATING	PART NO
12 VDC	100-243-7(R)
24 VDC	100-243-8(R)
32 VDC	100-243-9(R)

DC MAIN CB "C"	
RATING	PART NO
50A	208-026
60A	208-049
80A	208-024
100A	208-025

METER ILLUMINATION PRISM "A"	
RATING	PART NO
12 VDC	100-249-7
24 VDC	100-249-8
32 VDC	100-249-9

BACKLIGHT ASSY "B"	
RATING	PART NO
12 VDC	100-243-7(L)
24 VDC	100-243-8(L)
32 VDC	100-243-9(L)

**PANELTRONICS** Paneltronics, Inc.  
11860 N.W. 57th Court  
Hollywood, Florida, FL 33018

REAR VIEW  
PNL, DC MASTER (PREMIER)  
DC PANEL

CUSTOMER: PANELTRONICS

DRAWN BY: ATA DATE: 07/31/92

SHEET: 2 of 3 SCALE: 1X

REVISIONS: B

SCHEMATIC: CAT DRAWING #: 2206 REV: 0