

ADD-A-BATTERY



SIMPLIFIES SWITCHING AND AUTOMATES CHARGING OF TWO BATTERY BANKS

DON'T GET STRANDED WITH A DEAD BATTERY.

The ADD-A-BATTERY is as simple to operate as an ON-OFF switch, yet effectively manages the switching and charging of two batteries from a single charge source.

Dual Circuit Plus™ Battery Switch

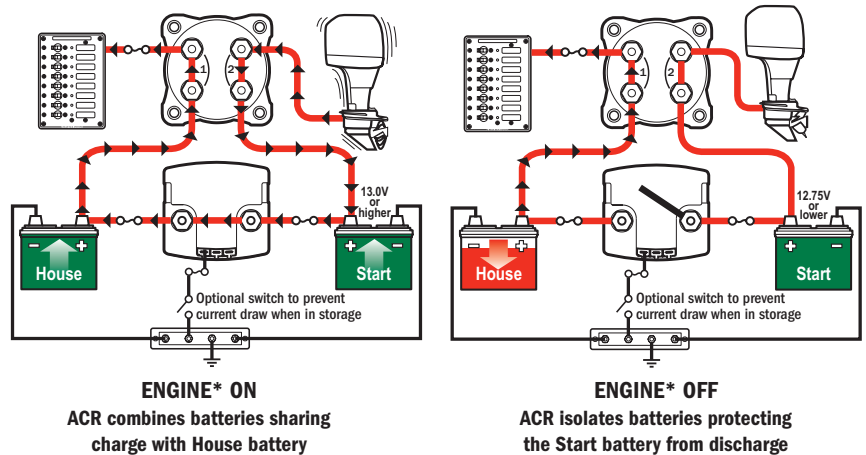
- 🔌 Simplifies switching
- 🔌 Isolates engine and house circuits
- 🔌 Combines batteries for emergency starting
- 🔌 Tin-plated copper studs for maximum conductivity and corrosion resistance
- 🔌 Blue Sea Systems one-piece terminal stud design never loosens over time

ACR Automatic Charging Relay

- 🔌 Automatically combines batteries during charging
- 🔌 Isolates batteries during engine cranking and when not charging
- 🔌 Shares the charge between two batteries 12 times more efficiently than a battery isolator
- 🔌 Allows efficient dual battery charging without needing regulator adjustment or rewiring
- 🔌 Easy to install wire - Does not require integration with engine wire harness



Operational Diagram



*Engine with alternator up to 65A for Mini Add-A-Battery and engine with alternator up to 120A for Add-A-Battery



Scan to learn more about Add-A-Battery products



ADD-A-BATTERY

Specifications

Mini Add-A-Battery

m-Series Dual Circuit Plus™ Battery Switch PN 6011

Cranking Rating: 10 sec.	1,000A per circuit	
Cranking Rating: 1 min.	650A per circuit	
Intermittent Rating: 5 min.	450A per circuit	
Continuous Rating	300A per circuit	
Voltage Max. Operating	32V DC	

Mini ACR PN 7601

	12V DC	24V DC
Continuous Rating	65A	65A
Intermittent Rating: 5 min.	115A	115A
Maximum Cable Size	1/0 AWG	1/0 AWG
Terminal Stud Size	1/4"-20	1/4"-20

Relay Contact Position

Combine (30 sec.)	13.6V DC	27.2V DC
Combine (2 min.)	13V DC	26V DC
Open Low (10 sec.)	12.35V DC	24.7V DC
Open Low (30 sec.)	12.75V DC	25.5V DC
Under Voltage Lockout	9.5V DC	19V DC

Add-A-Battery

e-Series Dual Circuit Plus™ Battery Switch PN 5511e

Cranking Rating: 10 sec.	1,000A per circuit	
Cranking Rating: 1 min.	750A per circuit	
Intermittent Rating: 5 min.	525A per circuit	
Continuous Rating	350A per circuit	
Voltage Max. Operating	32V DC	

SI-ACR PN 7610

	12V DC	24V DC
Continuous Rating	120A	120A
Intermittent Rating: 5 min.	210A	210A
Maximum Cable Size	1/0 AWG	1/0 AWG
Terminal Stud Size	3/8"-16	3/8"-16

Relay Contact Position

Combine (30 sec.)	13.6V DC	27.2V DC
Combine (2 min.)	13V DC	26V DC
Open Low (10 sec.)	12.35V DC	24.7V DC
Open Low (30 sec.)	12.75V DC	25.5V DC
Under Voltage Lockout	9.5V DC	19V DC
Over Voltage Lockout	16V DC	32V DC

Regulatory

E marked for Ignition Protection, Meets ISO 8846, UL 1500 and SAE J1171 external ignition protection requirements
Rated IP67—protected against immersion up to 1 meter for 30 minutes

7649 Mini Add-A-Battery

For most outboards

Alternators up to **65A**



m-Series 6011

1,000A Cranking: 10 sec.
650A Cranking: 1 min.
450A Intermittent: 5 min.
300A Continuous
32V DC Maximum
Cable size 4/0 AWG (120mm²)



m-ACR 7601

115A Intermittent: 5 min.
65A Continuous
12V or 24V DC Nominal
Max. Cable size 1/0 AWG (50mm²)

7650 Add-A-Battery

For outboards up to 350HP or inboards with stock alternators

Alternators up to **120A**



e-Series 5511e

1,000A Cranking: 10 sec.
750A Cranking: 1 min.
525A Intermittent: 5 min.
350A Continuous
32V DC Maximum
Cable size 4/0 AWG (120mm²)

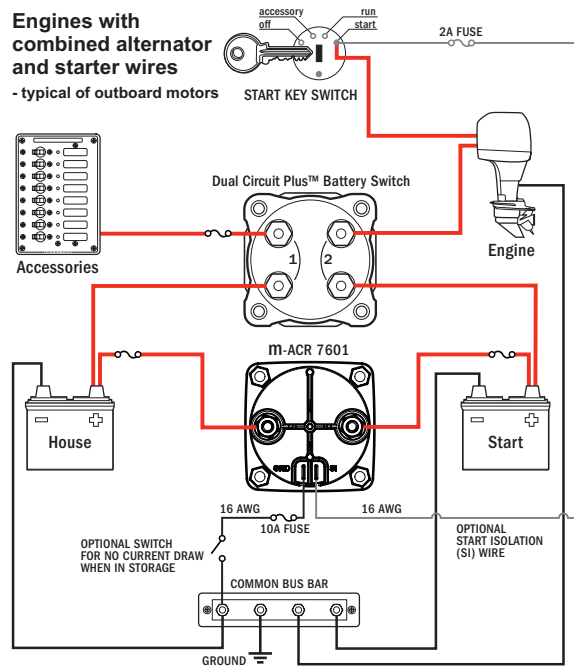


SI-ACR 7610

210A Intermittent: 5 min.
120A Continuous
12V or 24V DC Nominal
Max. Cable size 1/0 AWG (50mm²)

Engines with combined alternator and starter wires

- typical of outboard motors



Wiring diagram for both Add-A-Battery Kits



425 Sequoia Drive
Bellingham, WA 98226 USA
p 360.738.8230
p 800.222.7617 USA and Canada
f 360.734.4195
conductor@blueseas.com
www.blueseas.com

Specifications subject to change.
See blueseas.com for current information.
6833 Rev.006