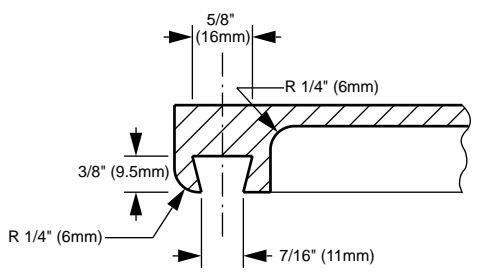


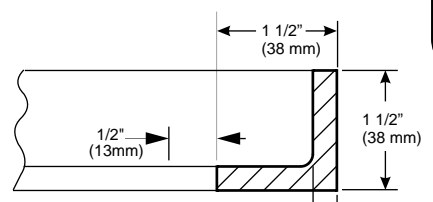
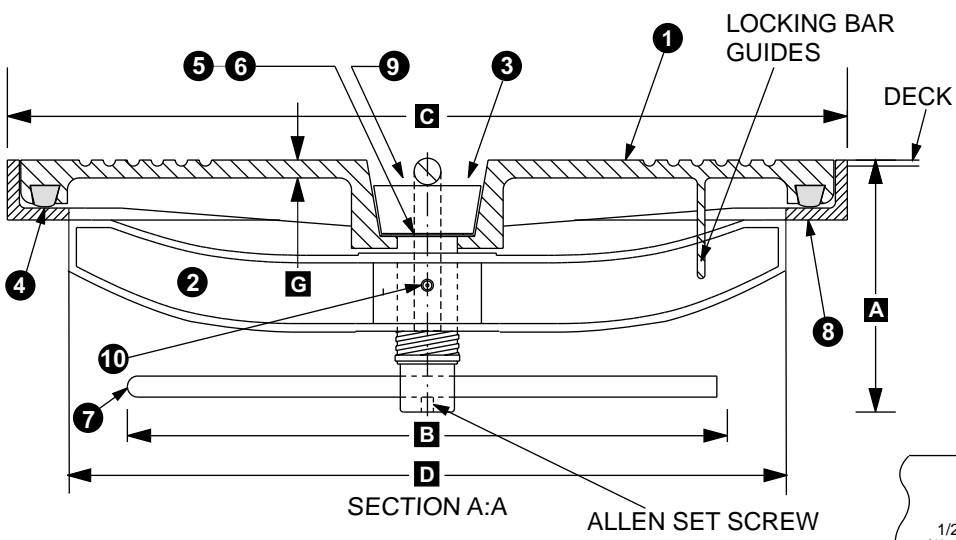
BILL OF MATERIAL: #500

PC.NO.	DESCRIPTION	MATERIAL
1	COVER	ALUMINUM ONLY
2	STRONGBACK	ALUMINUM ONLY
3	BOLT (1 1/2" Ø)	STAINLESS STEEL
4	GASKET	NEOPRENE
5	WASHER	STAINLESS STEEL
6	WASHER	NEOPRENE
7	ROD (1/2" Ø)	GALVANIZED STEEL
8	DECK RING	***
9	T-HANDLE	STAINLESS STEEL
10	LUBE ZERK	ANODIZED STEEL

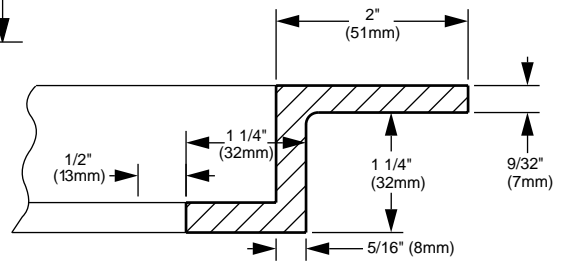
NOTE:
 *** CORROSION RESISTANT ALUMINUM, OR GALVANIZED STEEL



GASKET GROOVE, SECTION B:B



GALVANIZED STEEL DECK RING



CAST ALUMINUM DECK RING

T-HANDLE STRONGBACK

HATCH WEIGHTS LBS. (KGMS)	
Model Number	BFHO15X24 TH
Material	AL
Cover	31 (14)
Deck Ring	9 (4.1)

IMPORTANT: WHEN ORDERING, PLEASE SPECIFY OUTSIDE DIAMETER (C) OR CLEAR OPENING (D). UNITS ARE IDENTIFIED BY CLEAR OPENING.

Model Number	DIMENSIONS INCHES (mm)								
	A	B	C(L)	C(W)	D(L)	D(W)	E	F	G
BFHOTH15X24	5 1/4 (133)	12 1/2 (318)	26 1/2 (673)	17 1/2 (445)	24 (610)	15 (381)	1 1/4 (32)	1/4 (6)	3/8 (9.5)

BAIER Marine Company, Inc.
 1-800-455-3917
 206-632-2441 (FAX)
 sales@baiermarine.com

BAIER FLUSH HATCH
 LIFT-OUT DOGGED TYPE WITH BUILT-IN T-HANDLE
 TYPE "C" POSITIVE LOCKING
 MODEL BFHOTH15x24

DWG. NO. 500